

Map Intelligence Application Guide

Indoor Mapping: Casino

Integeo Pty Ltd
PO Box 533
Hazelbrook NSW 2779
Australia

Tel: +61 2 9045 3391
Email: info@integeo.com
Web: <http://www.integeo.com>

COPYRIGHT

Copyright © 2017 Integeo Pty Ltd. All rights reserved.

TRADEMARKS

Map Intelligence and integeo are registered trademarks of Forge Information Technology Pty Ltd and its licensors.

All other product names mentioned herein may be the trademarks or registered trademarks of their respective owners.

DOCUMENT INFORMATION

Version	Date	Comments	Author(s)
Casino_MI-Excel_4.2_MI-SP-4.4_01.docx	08 Jan 2017	Initial Version	Michael Nicholls

APPLICATION VERSION INFORMATION

Map Intelligence

MI Client Excel - v 4.2
MI Server – SP – v 4.4

TABLE OF CONTENTS

Indoor Mapping: Casino Application	4
Introduction.....	4
About this Application	4
How to access the Indoor Mapping – Casino Application.....	4
Exploring Map Intelligence	5
Viewing the legend	5
Using the Pan navigation option.....	6
Zooming in for a closer look	8
Thematic Layers	9
Printing a Thematic Floor Plan	11
Closing Map Intelligence	13

INTRODUCTION

ABOUT THIS APPLICATION

This very simple Map Intelligence application looks at how you can use Map Intelligence to display a casino floor plan as opposed to maps of the world. The demo analyzes the *Casino Gaming Zones*, themed according to the *Average Bet*, then further analysis of the actual gaming tables and slot machines themed according to *Average Bet* or *Buy In*, finally we see how easily it is to print a thematic floor plan report.

This Guide will take you through each step for

- changing themes;
- zooming in using the navigation controls or zoom to marquee tool;
- viewing additional information in the Location Information panel; and
- printing the floor plan

HOW TO ACCESS THE INDOOR MAPPING – CASINO APPLICATION

1. From the Integeio website, **Indoor Mapping** page, click the **Start Casino Application** button.

START CASINO APPLICATION

2. A browser will open launching the application.

EXPLORING MAP INTELLIGENCE

On opening the browser will display the Map Intelligence Viewer showing the floor plan of a casino. The casino is divided into eight Gaming Zones, labelled *Zones A to Zone H*.



Figure 1: Casino Floor plan showing Gaming Zones.

Note For a closer look at the floor plan, click the **+** button on the navigation controls to zoom in by one level at a time, until the floor plan is at the desired size.

VIEWING THE LEGEND

To display the Map Intelligence Legend

1. Click the **Show Legend** button .

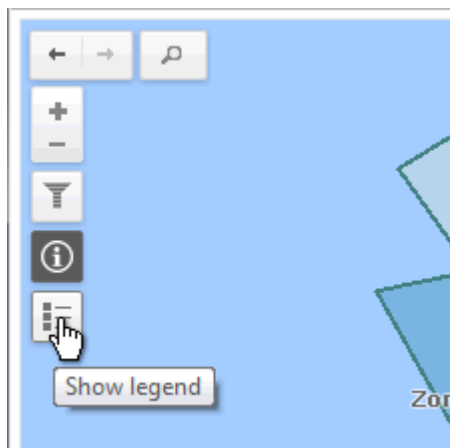



Figure 2: Selecting the Show Legend button.



Figure 3: Floor plan and Legend.


The Gaming Zones are color coded according to the Average bet. We can clearly see that Zone B as the highest average bets and Zone H the least.

Moving the Legend

1. Click the **Legend**, the mouse pointer changes from a Pointer to a pan pointer .
2. Move to reposition the Legend and when in the correct position, release the mouse.

USING THE PAN NAVIGATION OPTION

To Pan (move the map)

1. Click the **Map**, the mouse pointer changes from a Pointer to a pan pointer .
2. Move to reposition the map and when the desired layout is achieved, release the mouse.




Touch screen users can swipe to pan greater distances.


LOCATION INFORMATION

Further details about a location can be found by using the *Location Information* feature.

To activate Location Information

1. Ensure that the Location Information button  is active, if not click the button.



- Once activated the Location Information button will change to active mode , click again to turn Location Information off.
- By default the Location Information mode is active.

2. Click anywhere in the map, the click point will be highlighted by a *Location Information Marker* and the *Location Information panel* will open displaying the features found underneath the cursor.



Figure 4: Location Information marker

3. Click on **Zone B**, the darkest blue area to the top, left of the floor plan. The Location Information panel will appear stating the Average Bet and Average Weekend Bet the Zone. (Figure 5).

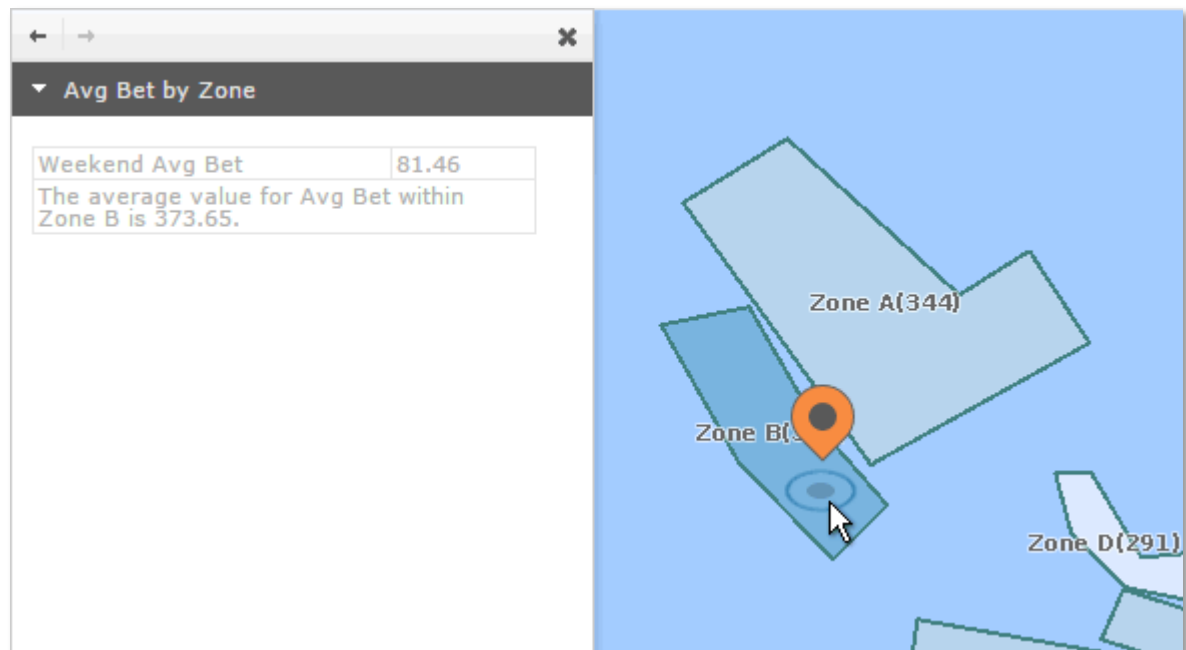


Figure 5: Location Information panel showing average betting details for Zone B.

4. Now click on **Zone H**, the lightest blue area to the bottom, right of the floor plan, the Location Information panel will update to display the average betting information for the Zone (Figure 6).

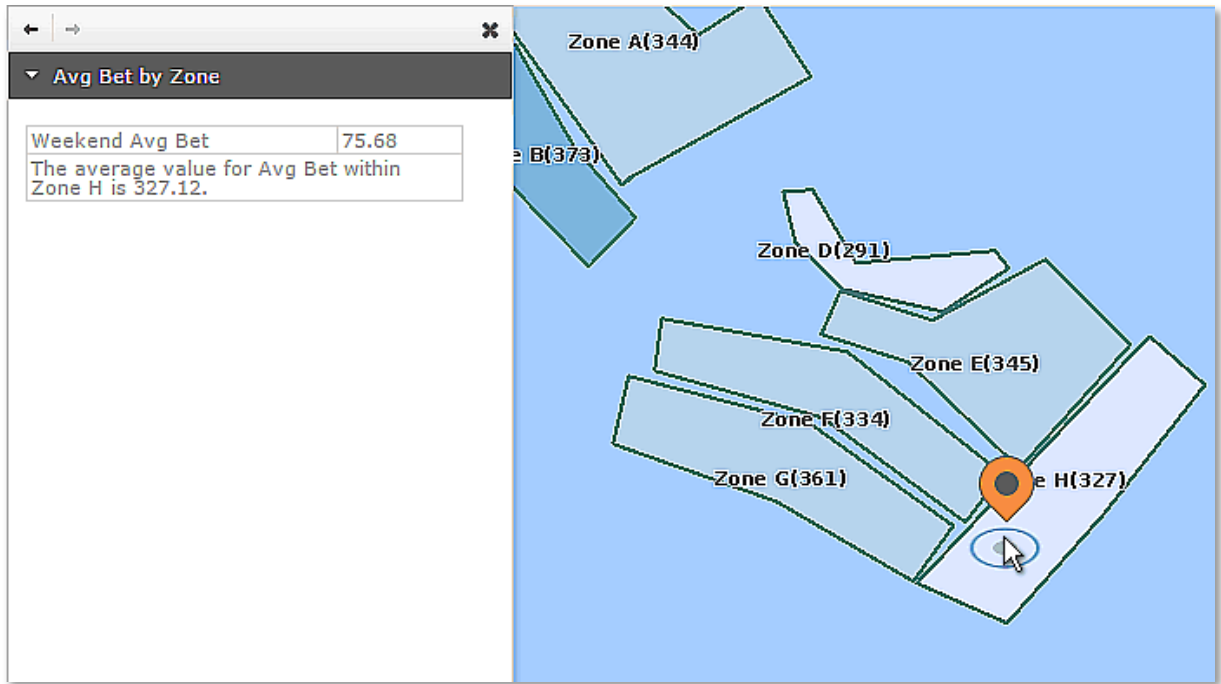



Figure 6: Location Information Panel showing average betting details for Zone H.

5. Click the **Close** button  to close the Location Information panel.

ZOOMING IN FOR A CLOSER LOOK

Using the **Zoom to Marquee** navigation tool, we are now going to take a closer look at Zone B, the zone with the highest average bet.

1. Move the mouse to a start point on the floor plan, press the **SHIFT** key, click on the map and draw by dragging, a rectangle shape around the **Zone B**, as seen in Figure 7. The floor plan will change to a close-up view of the selected area.

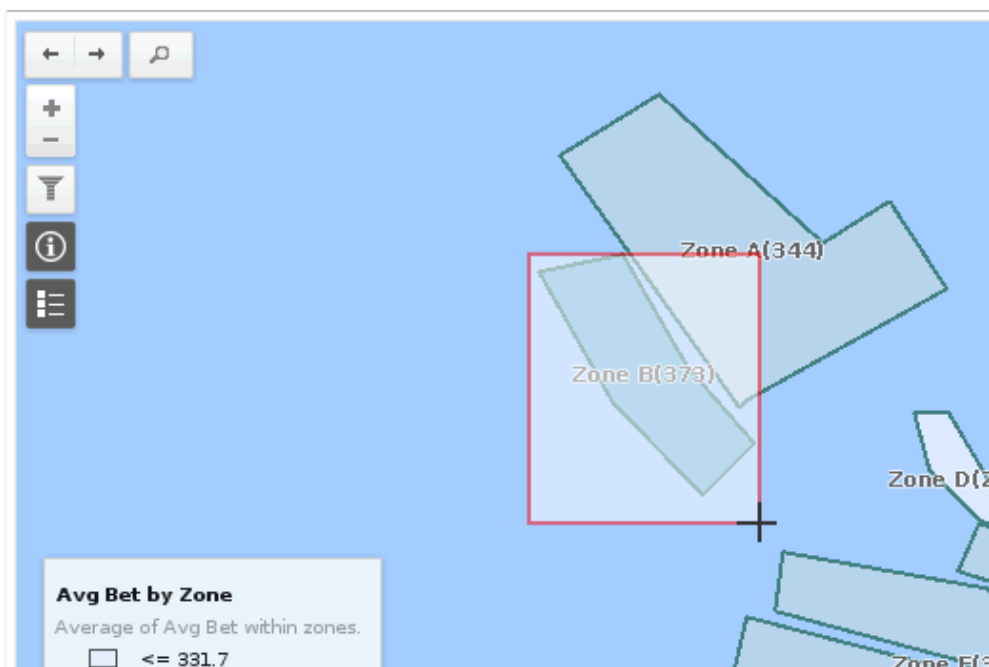
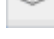


Figure 7: Zoom to Marquee

The floor plan will change to a close-up view of the selected area, showing the gambling tables and slot machines.

THEMATIC LAYERS

We can view gambling information for individual machines and tables.

1. Click the **Layer Manager** button , located at the top right of the MI Viewer. The *Layer Manager* will open showing the *Thematic Layers* panel.
2. From the **Thematic Layers** panel, select the **Avg Bet by Machine/Table** radio button. The floor plan will now display a theme color coding the machines and gaming tables and slot machines according to the average bet per table or machine (Figure 8).

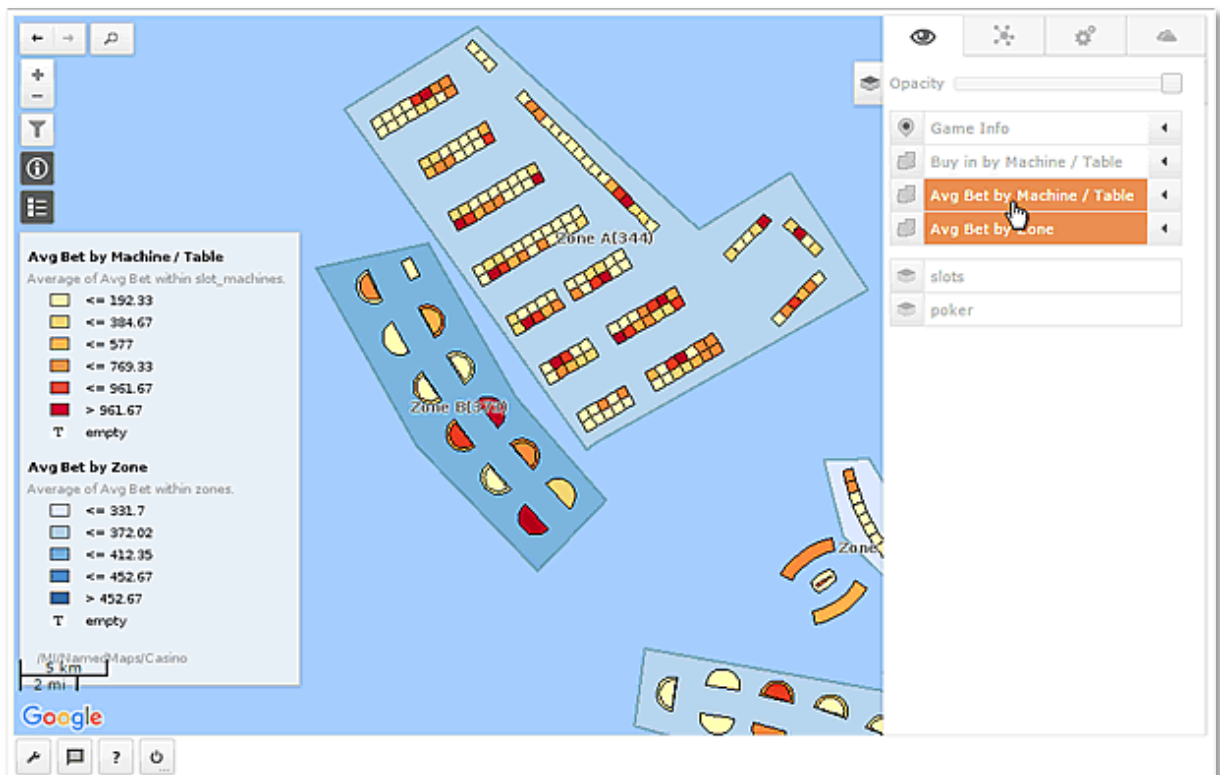


Figure 8: Average Bet by Machine / Table theme.

3. Now select the **Buy in by Machine / Table** radio button, the floor plan will update to show the slot machines and gaming tables color-coded according to the average buy in per machine / Table (Figure 9).

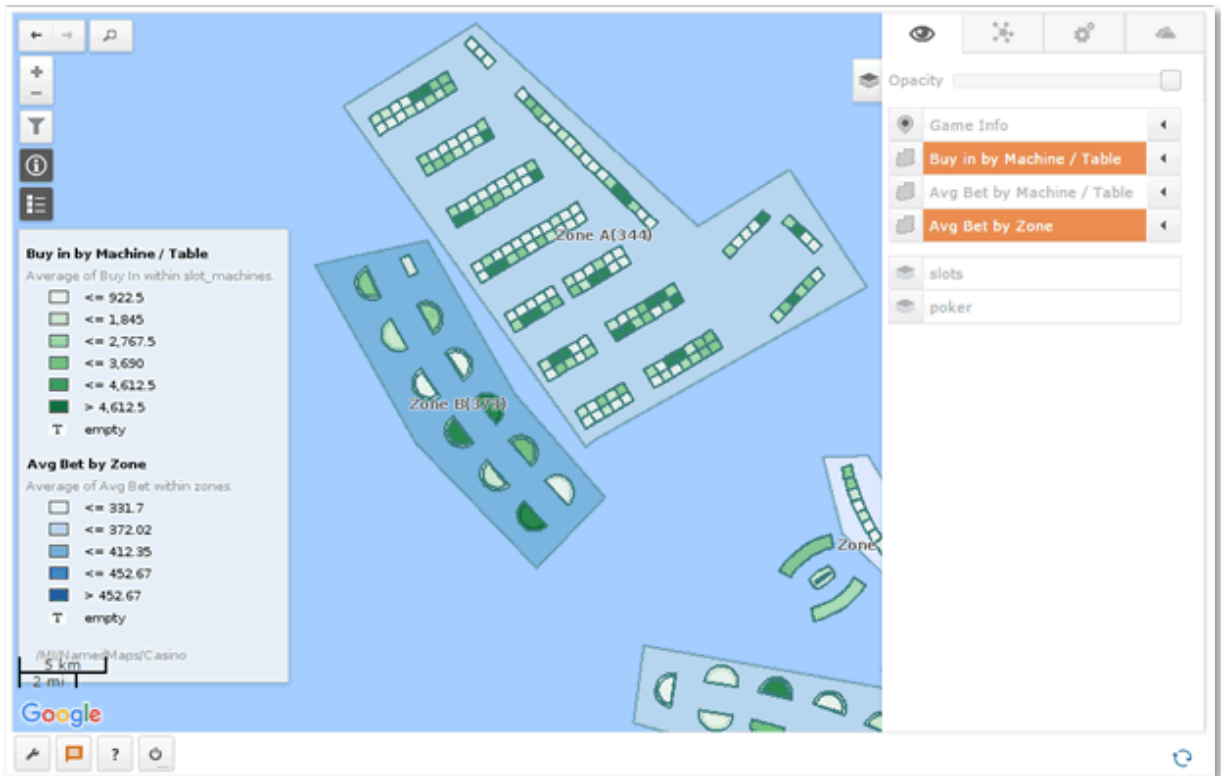


Figure 9: Average Buy in by Machine / Table theme .

- From the **Thematic Layers** panel, select the **Game Info** layer checkbox, the floor plan will update to show the individual points for the tables and machines color-coded according to the Game Group, black squares ■ = Roulette, Purple squares ■ = Twenty One and Pink Squares ■ = the slot machines.

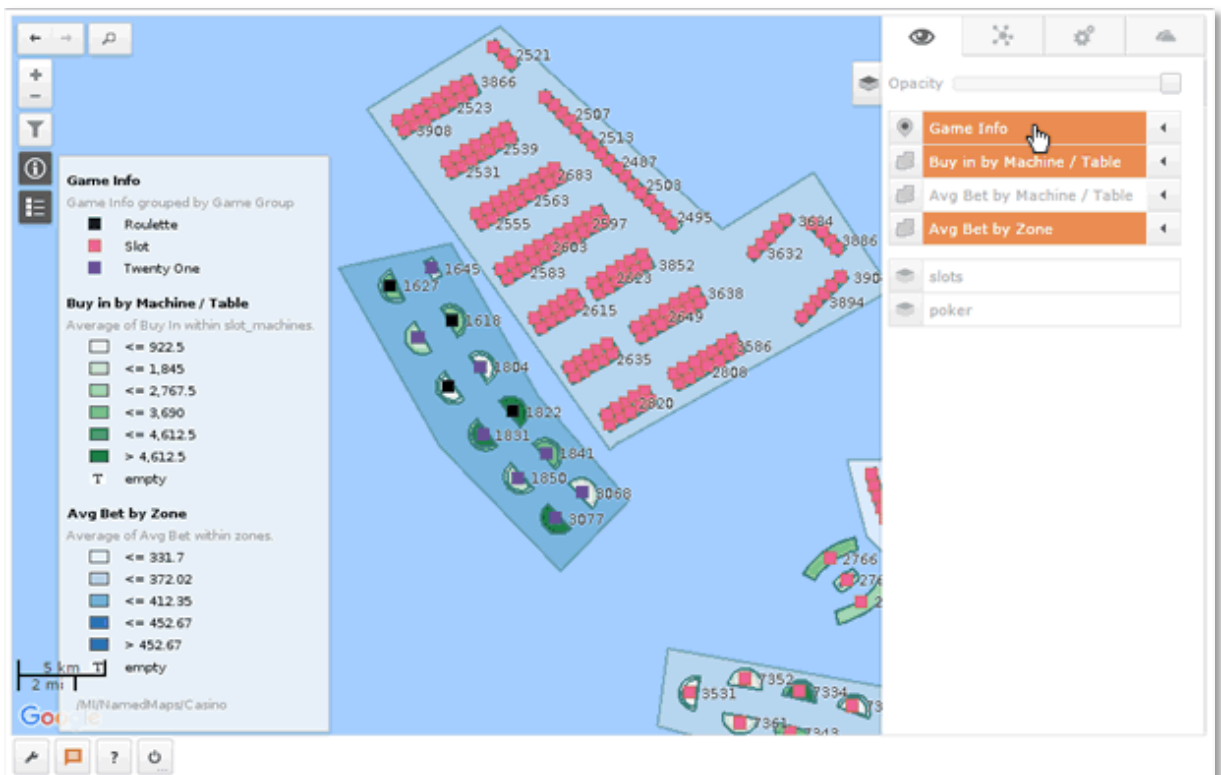


Figure 10: Points – Game Info.


- Clicking on any of the points will provide further Game Information in the information popup.



Figure 11: Location Information – Game Info.

PRINTING A THEMATIC FLOOR PLAN

You can print a map consisting of a thematic floor plan, rendered in PDF, PNG or GIF.

1. From the Toolbar at the bottom of screen, click the **Tools** button , the Tools panel will open.
2. From the **Tools Printing** section, click the **Configure** button.

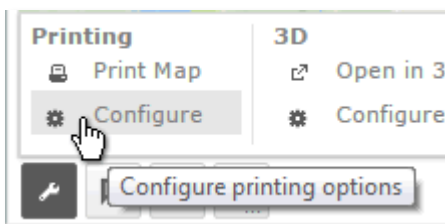


Figure 12: Opening the Configure printing options panel.

A panel similar to the one shown in Figure 13 will appear.

3. From the **Template** drop-down ensure the **Map image incl. overlays** template is selected..

The Map Intelligence installation includes the two default templates, *Map image incl. overlays* and *Legend incl. overlays*.



Additional templates can be configured by the Map Intelligence Server Administrator.

4. From the **Format** drop-down list, select **Portable Document Format (PDF)**.

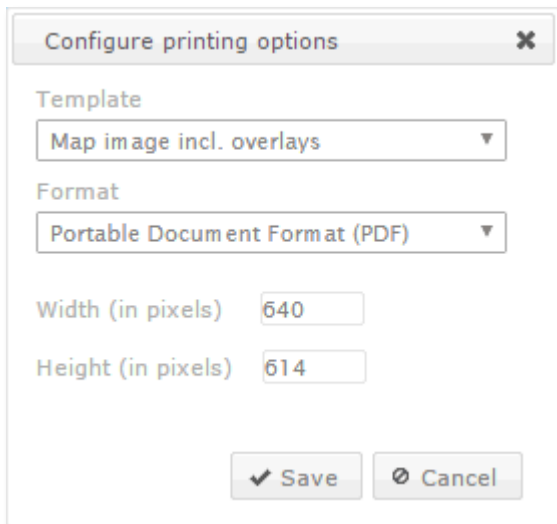


Figure 13: Configure printing options.

5. In the **Width** field enter **640**.
6. In the **Height** field enter **640**.




Note

The image output size is limited to the maximum size in pixels allowed by the provider of the static map images. These limitations may change over time and at the time of editing this Quick Guide the limitations for the following providers are indicated at:

Google: <https://developers.google.com/maps/documentation/staticmaps/#Imagesizes>

Bing: <http://msdn.microsoft.com/en-us/library/ff701724.aspx>

7. Click the **Save** button.
8. Click the **Print Map** button  **Print Map** to generate the map for printing.

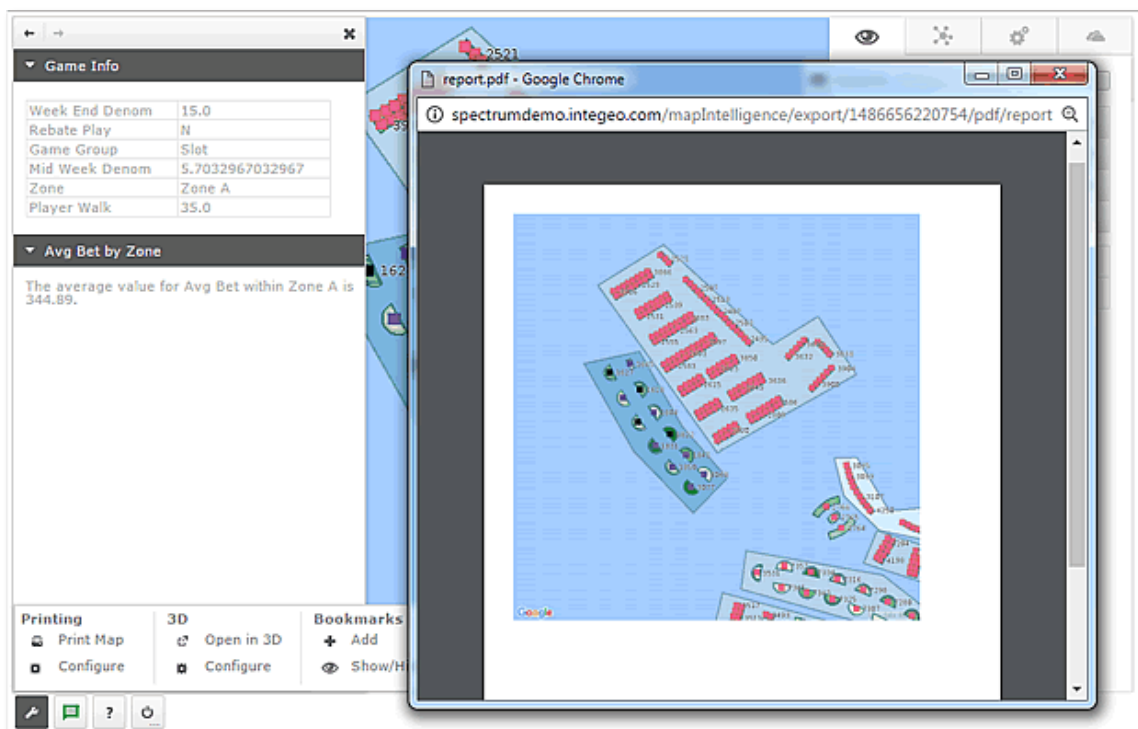



Figure 14: Print Report (PDF)


9. Close the print preview window.

This has been a very simple demonstration, showing only a few of the analytical tools available in Map Intelligence.

You can find out more information about Map Intelligence tools by clicking the Help button  on the toolbar.

CLOSING MAP INTELLIGENCE

Before we close the MI Viewer, you need to end your Map Intelligence session.

1. Click the **End Session** button  to end your current Map Intelligence session.
2. Close your browser.