



Integeo Map Intelligence for Esri ArcGIS and IBM Cognos Analytics is a complete and scalable solution for customers who wish to leverage Esri maps and layers inside IBM Cognos Analytics.

1. In January of 2017 Esri Software deprecated support for its IBM Cognos connector. Esri no longer supports integration with any BI vendor product including IBM Cognos.
2. With the September announcement of IBM Cognos Analytics R7, IBM announced going forward they will no longer support Esri's connector to Cognos and have recommended customers consider Integeo as a fully "supported, affordable and performant" long term solution.
3. Unlike other mapping options Integeo provides direct, dynamic and high performance integration with Esri ArcGIS as well as providing advanced spatial analytic features and visualization capabilities for all Cognos end-users, including support for PDF output.

Access these demonstrations at demo.integeo.ca

Asset Divestiture Optimization for Real-Property

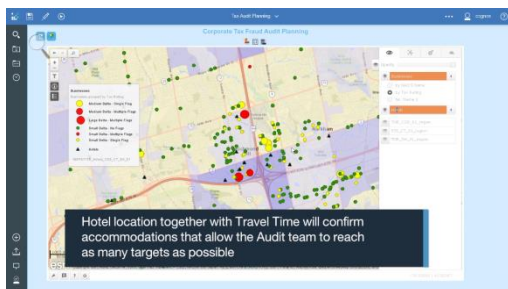


See Integeo connecting IBM Cognos Analytics and Esri Maps enabling spatial analytics capabilities

Merge real-property information and financial data (from disparate systems) with Esri ArcGIS to create new insights

Better plan resources to achieve financial objectives

Spatial Data Integration for Corporate Tax Fraud Audit Planning

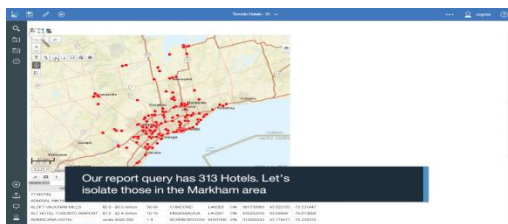


Use travel/drive-time and cluster visualizations with Esri maps to improve selected business targets

Combine internal and external data to better indicate abnormalities and possible fraud

Optimize staff resources by easily identifying secondary targets to visit while in the area

Author a Cognos Report that uses an Esri map



Author a report in IBM Cognos Analytics that contains an Esri map with BI data about hotels in Toronto

Ensure Esri map and Cognos Report are synchronized

Confirm the Esri map will correctly print to PDF